

# SmartOffice PS286 Plus

plustek

SmartOffice Series

## ❖ SOFTWARE



Presto! PageManager 9

### NewSoft Presto! PageManager 9 for Win/Mac

Presto! PageManager 9 for Mac is an easy to use, front-end page client that provides for all your documents. Capabilities include Capture, Preview, Convert and Deliver all your paper and electronic documents to a designated location. You simply drag-&-drop to stack or merge files, or use the embedded OCR (Optical Character Recognition) feature to convert them to a searchable PDF.



BizCard 6

### NewSoft Presto! BizCard

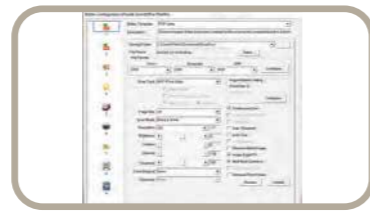
A comprehensive contact management system that helps you scan business cards, edit business cards, and then synchronize the contacts to various management applications. It is the ideal tool for staying in touch and organized no matter what languages your contact's business cards are printed in.



MacAction

### Plustek MacAction

Plustek MacAction is the button utility software enables scanning by simply touching a button. This combination results in high-quality images that users can easily and quickly locate, access, edit, annotate, organise and share from the software's easy-to-use interface. Scanned documents are automatically sent directly to Printer, Email or Folder. MacAction also enables you to scan directly and save scanned documents in all common imaging formats including: JPEG, TIFF, MULTI-TIFF, BMP, and PDF.



DocAction

### Plustek DocAction

Button utility to simplify document scanning. DocAction enables you to specify your personalized scanning configuration settings and scan documents with the touch of a button. Scanned documents are automatically sent directly to Printer, Email, Folder or FTP. DocAction also enables you to scan directly to many imaging and document management applications. DocAction saves scanned documents in all common imaging formats including: JPEG, TIFF, and PDF.



Powered by  
ABBY®

### ABBY FineReader 12 Sprint

Unlocks the data inside paper-based documents, images and PDF files with enhanced accuracy that eliminates the need for retyping and reformatting. Tool that increases your productivity and efficiency which comes with simple user interface and supports recognition up to 183 languages.

# SmartOffice PS286 Plus



## Users Now Have the Ability to Scan to Their Mac Computer With PS286 Plus Scanner



The SmartOffice PS286 Plus 27 page per minute document scanner for PC and MACINTOSH Computers features built in image processing for high quality images and increased OCR accuracy, robust paper handling for fewer misfeeds and rescans, and bundled software applications that enable greater user productivity. The scanner also features LED instant-on illumination with no warm-up and an Automatic Feeder Capacity of 50 pages.

## ❖ KEY FEATURES

- 27ppm/54ipm scan speed in grayscale mode
- 1500 page per day duty cycle
- Improved high quality imaging and robust paper handling
- Scans long documents up to 50"
- 50 sheet Automatic Document Feeder
- Small footprint – easily transportable and fits in crowded office
- Single touch scanning to popular formats including Searchable PDF, PDF/A, Word, Excel, JPEG and TIFF
- Scans rigid cards including insurance cards, ID cards, drivers licenses etc

### Hardware Requirements

Pentium IV 2.0 GHz processor (Pentium IV 3.0 GHz processor recommended)  
CD-ROM Driver  
One available USB Port (USB 2.0 recommended)  
1GB RAM or higher recommended  
800 MB free HDD space (1 GB or larger recommended)

### Specification

Image Sensor	CIS x 2
Light Source	LED
Optical Resolution	600 dpi
Hardware Resolution	600 x 600 dpi
ADF Capacity	1. 50 sheets (A4/ Letter, 70 g/m <sup>2</sup> or 18 Lbs), Max. thickness under 5mm (0.2"). 2. 20 sheets (Business Cards). 3. Plastic Card, Max. thickness under 1.2 mm. Note: Maximum ADF capacity varies, depending upon paper weight.
Scanning Speed ( ADF )	27 ppm/ 54 ipm (Grayscale mode, 200 dpi, A4 Portrait) 27 ppm/ 54 ipm (B&W mode, 200 dpi, A4 Portrait) 9 ppm/ 18 ipm (Color mode, 200 dpi, A4 Portrait) Note: Results may vary depending upon your scanning application, computer processor and system memory.
Scanning Area (W x L)	Max. 216 x 1270 mm (8.5" x 50") Min. 13.2 x 13.2 mm (0.52" x 0.52")
Acceptable Paper Sizes (W x L)	Max. 220 x 1300 mm (8.66" x 51") Min. 50.8 x 50.8 mm (2" x 2")
Acceptable Paper Weight (Thickness)	50 to 105 g/m <sup>2</sup> (14 to 28 Lbs)
Daily Duty Scan ( Sheets )	1,500
Roller Lifetime (Scans)	100,000
Pad Lifetime (Scans)	20,000
Action Button	Scan, PDF, OCR, File, E-Mail, Copy, BCR, FTP. All Customizable.
Power Supply	24 Vdc/ 0.75 A
Interface	USB 2.0
Net Weight	1.66 Kgs (3.66 Lbs)
Dimensions (W x D x H)	263 x 128 x 148 mm (10.36" x 5.02" x 5.83")
Protocol	TWAIN Compliant
OS	Windows XP / Vista / 7 / 8 / 10 Intel-based Macs with OS X (v10.6 - v10.8.x) LINUX SANE for Systems Integrator. Please contact local sales.



As an international ENERGY STAR Partner, Plustek has determined that this product meets the international ENERGY STAR Program for energy efficiency.

Headquarters: sales@plustek.com

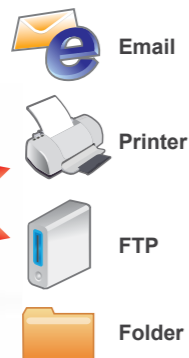


### Easy-to-Use MacAction

Users can scan to their PC or Mac computer with the SmartOffice PS286 Plus scanner by simply pressing a button. DocAction (PC) and MacAction (Mac) enable users to create and save 9 different scanning jobs including: scan to folder, scan to email, copy, create PDF and more. To scan, simply insert the paper, select the job and press scan! Files are saved in any of the following formats Searchable PDF\*, PDF/A, Word\*, Excel\*, JPEG and TIFF.

### Versatile Document Handling

The SmartOffice PS286 Plus is designed to scan business documents up to 14" long and rigid cards, such as ID cards and drivers licenses, up to 1.2mm thick, without operator adjustments. Mixed batches of documents can be scanned without sorting thanks to the class leading paper handling and image processing.



### Advanced One-Button Scanning

With Plustek's DocAction exclusive software application, users only need to properly place the document on the scanner, then press the "Scan" button. What is best, the scanned image can be directly sent to your desirable destination applications. The features allow you to directly scan to searchable PDF, PDF/A, OCR and BCR, and also access programs seamlessly, such as Excel, Word, Email, Copy and Save to File directly.

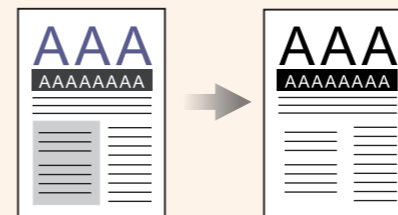


### Compatible with most imaging applications

Industry standard TWAIN drivers combined with TIF, JPG, PDF and Microsoft Office file formats ensure compatibility with thousands of scanning and imaging programs. ABBYY FineReader Sprint is included\* to easily create and manage searchable PDFs at the touch of a button. Built in image processing insures the highest image quality, reduces rescans and increases OCR accuracy.

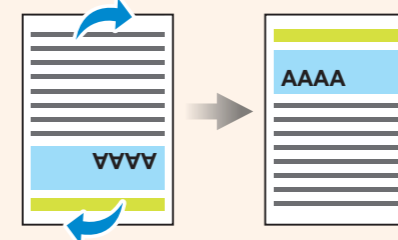
#### 1 Auto Threshold\*

Automatically threshold the current image into a binary black and white image.



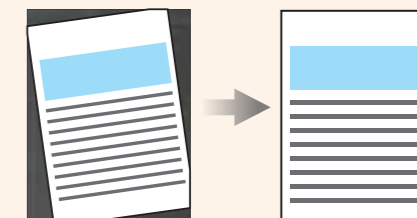
#### 2 Auto Rotate\*

Automatically rotates document based on the contents of the document.



#### 3 Auto Crop & Deskew\*

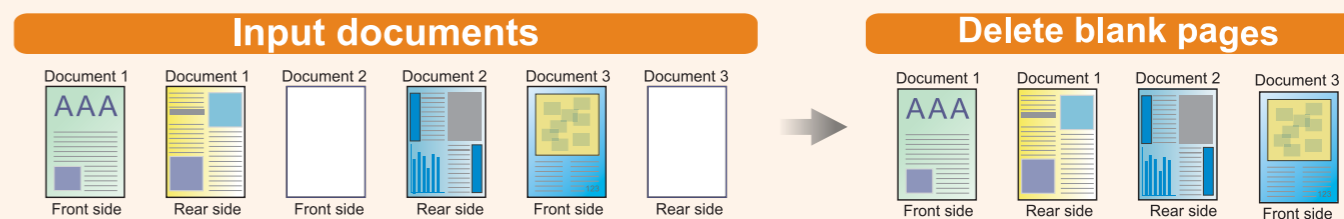
Automatically straightens and crops image to the documents actual size.



#### 4 Color Dropout\* Removes red, green or blue color when scanning forms.



#### 5 Blank Page Removal\* Automatically removes blank pages without manual editing.



\* Features only available in PC version

**27** PPM  
**54** IPM

Fast duplex scanning at speeds up to 25 pages per minute in Grayscale mode.

**50** pages

Effective scanning with large Automatic Document Feeder up to 50 pages.



Digitize paper business cards into easily-managed and sorted contacts, and turn your business cards into information.



Scans embossed rigid cards such as ID cards, insurance cards, drivers licenses and credit cards up to 1.2mm. Perfect for vertical applications such as healthcare, pharmacy, accounting, hospitality, etc.



Save paper documents as searchable PDFs at the touch of a button and find your information faster.



Allows you to easily upload files or scanned images to a compatible server of your choice including Google Docs, Microsoft SharePoint, Box, Dropbox, Twitter and FTP servers.